

Industrial Parts and Equipment



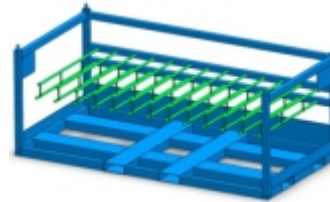
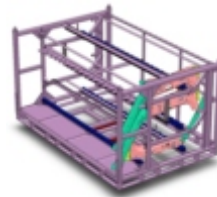
Fabrication

Racks for Machines

Steel Racks for IP, Doors.

Bag Racks for Doors and Class A plastic.

100-3000 Rack Fabrication Projects



Components

Products

Mechanisms, assemblies
Machined and cold formed parts
Engineered bolts

Problem

Engineer and manufacture
complex parts and assemblies
needing specialized equipment

Solution

- Mechanisms and assemblies with formed and molded parts
- CNC machined parts with secondary operations
- Stamped and formed part assemblies
- Industry specific heat treatments and coatings
- Full traceability to raw material lots



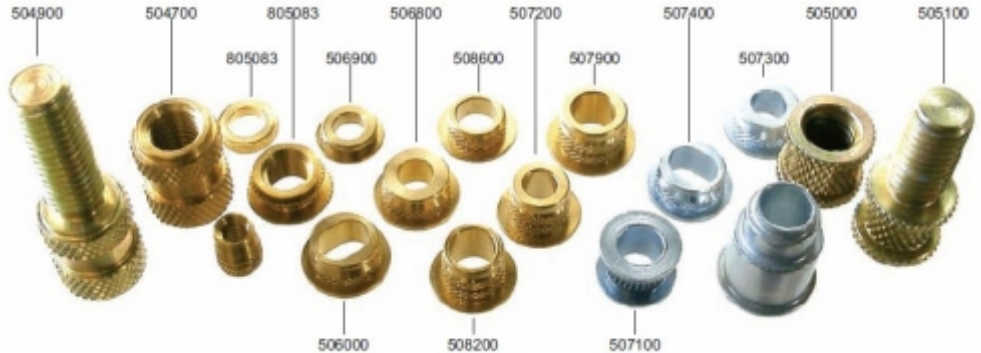
Machined Parts

Problem

Glass filled plastics need to be protected from cracking under load when fastened with bolts M6 or greater in diameter

Solution

Compression limiters in steel, aluminum, and brass are readily available from tooled parts. Our high production runs lead to economical prices. These parts eliminate cracking under load or in service of glass filled plastic parts. Studserts and bolts with captive compression limiters are used in oil pans and brake booster covers where bolts need to stay in place for safety and performance.



Cold formed parts and extrusions

Products

Bushings, flanges, and gear profiles

Problem

Reduce cost and weight of high volume machined production parts

Solution

Cold formed parts up to 32mm in diameter
Upto 4" in length
High volume steel parts
Heat treated
Meet tensile strength of grades 4.8, 8.8, 10.9, 12.9
All automotive coatings to 1000 Hours Salt Spray



Engineered Components

Products

Bolts, Dual ended studs
Bolt and Washer assemblies
Captive bolts, Drive gears, Micro screws

Problem

Precision requirements
Noise, Vibration, and Harsh environment
High corrosion resistance

Solution

- Machined and hybrid parts
- Large bearing area and washer assemblies
- Coatings upwards of 1000 Hrs Salt Spray
- GM, Ford, FCA, Toyota, Nissan, Caterpillar
- Finishes in e-coat, paint, and zinc nickel plating
- ROHS complaint reporting through IMD System
- Full lot traceability to mill heat certs



Electrical Terminal Components

Made to the industry's highest standards, UL 486A and 486B, Termilock™ Terminal Screws are made to withstand Underwriters Laboratories' torque, secureness, and pullout tests under the provisions of both UL 486 and IEC 60999.

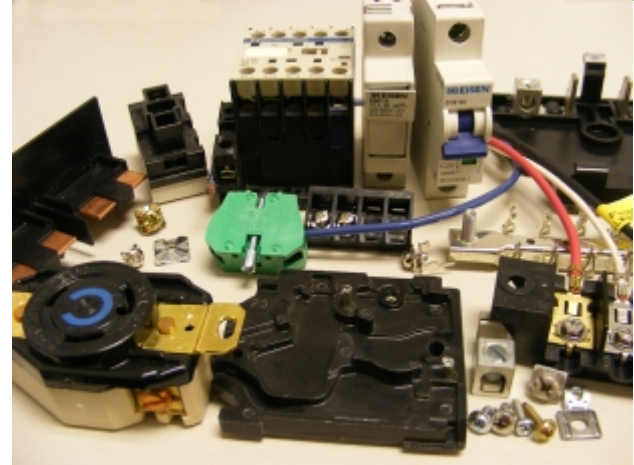
Termilock™ Screws - Steel & Stainless



Electrical Assemblies

Competency: Product development and manufacturing of low voltage electric terminal blocks, switches, sockets, power disconnects, and battery terminal assemblies.

Electric blocks, switches, terminals



PED Fittings and Accessories

Pressure equipment directive compliant
fully traceable studs, nuts, and fittings, each
part coded with heat numbers

Applications

Ideal for upstream, midstream and downstream oil
& gas operations, petrochemical operations, and
any high flow application in a harsh environment

SS Pipe Plugs, B7, B8 Studs and Nuts



Switchgear

Disconnects for machinery and military. Control Panels to UL508.

Disconnects and Terminal Blocks



Plants & Processes

Lansing, Michigan, US

3340 Pinetree Rd
Lansing, Michigan, US

Products

Fabrication and Engineered
Components

Processes

Design Engineering
Prototyping
Forming, Machining
Fabrication
Sewing
Assembly

