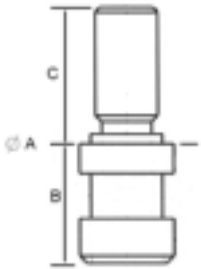
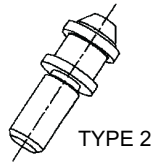


MOLDED INSERTS



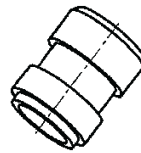
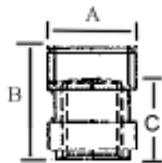
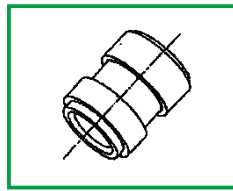
TYPE 1

Usage:

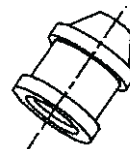
These heavy duty threaded inserts are used for insert molding into glass filled thermoplastic and thermoset materials. Diamond knurls and multiple undercuts lend exceptional rotational resistance to these parts. Steel inserts are designed for mass production, high tensile strength, and low piece cost.

CATEGORY	80 Inserts
MATERIAL	Steel: 12L14 Brass: C3600
FINISH	Steel: Zinc Dichromate Brass: None

Screw Thread Diameter	Total Length (mm)	Part number	Material	A +/- 0.2 (mm)	B +/- 0.2 (mm)	C +/- 1 (mm)	Torsional Strength Ft Lb	TYPE
1/2-13	2-1/4"	805046	12L14	19	22	35	75	1
1/2-13	2"	805049	12L14	19	24.2	25.4	75	1
1/2-13	2"	805051	12L14	19	22.6	25.4	75	2

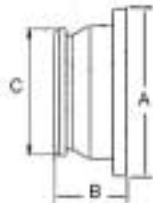


TYPE 3



TYPE 4

Screw Thread Diameter	Total Length (mm)	Part number	Material	A +/- 0.2 (mm)	B +/- 0.2 (mm)	C +/- 1 (mm)	Torsional Strength Ft Lb	TYPE
1/2-13	1-5/8"	805047	12L14	19	24.2	18.3	N/A	3
1/2-13	1-3/4"	805048	12L14	19	26	19	N/A	3
1/2-13	1-1/2"	805050	12L14	19	22.8	15.5	N/A	4
M12-1.75	43	805052	12L14	19	24	19	N/A	3



TYPE 5



TYPE 6

Hole Diameter (mm)	Total Length (mm)	Part number	Material	A +/- 0.2 (mm)	B +/- 0.2 (mm)	C +/- 0.2 (mm)	TYPE	NOTES
8X11	8	805060	C3600	18.75	8	14.2	5	OVAL HOLE 8mm x 11 mm
8	8	377-01	C3600	18.75	8	15	6	Round Hole

All Dimensions subject to change without notice. Dimensions are for reference only.