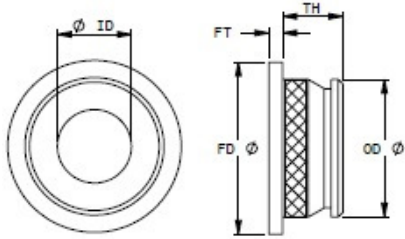


Compression Limiters

CLFR



CLFR - Compression Limiters with Flange and Round hole. Multiple installation options. Used press fit, ultrasonic, or insert mold depending on application and substrate material.



805082



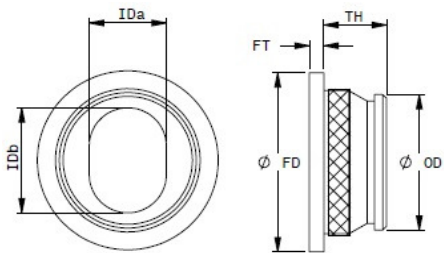
805073



805093

TH	SIZE ID	OD	Qty Pkg	Item No.	FT	FD	Material	Knurled
CLFR - Compression Limiters Brass material with Flange base and Round hole								
5 .196	9 .354	12.4 .488	100	805086	1 .039	18.00 .708	Brass	Yes
5 .196	10 .393	15.0 .590	100	805093	2 0.078	20.00 .787	Steel Zinc Nickel Plated	No
5 .196	11 .393	15.0 .590	100	805093-01	2 0.078	20.00 .787	Steel Zinc Nickel Plated	No
7 .196	11 .393	15.0 .590	100	805093-02	2 0.078	20.00 .787	Steel Zinc Nickel Plated	No
6.5 .255	8 .315	14.1 .558	100	805068	1.5 .059	18.75 .738	Brass	Yes
6.5 .255	8 .315	14.1 .558	100	805073	1.5 .059	18.75 .738	Steel Zinc Plated	Yes
10 .393	7 .276	12.4 .488	100	805072	1 .039	18.00 .708	Brass	Yes
10 .393	9.3 .366	12.4 .488	100	805082	1 .039	18.00 .708	Brass	Yes
10 .393	9.3 .366	14.5 .573	100	805079	1 .039	20 .787	Brass	Yes

CLFO



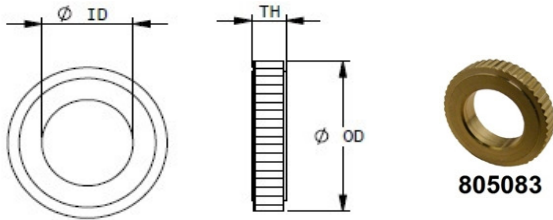
CLFO - Compression Limiters with Flange and Oval hole. Multiple installation options. Used press fit, ultrasonic, or insert mold depending on application and substrate material.



TH	SIZE ID-Small	ID-Big	OD	Qty Pkg	Item No.	FT	FD	Material
CLFR - Compression Limiters Brass material with Flange base and Round hole								
6.5 .255	8 .315	11 .433	14.2 .559	100	805060	1.5 .059	19 .748	Brass
6.5 .255	8 .315	11 .433	14.2 .559	100	805074	1.5 .059	19 .748	Steel Zinc Plated

Compression Limiters

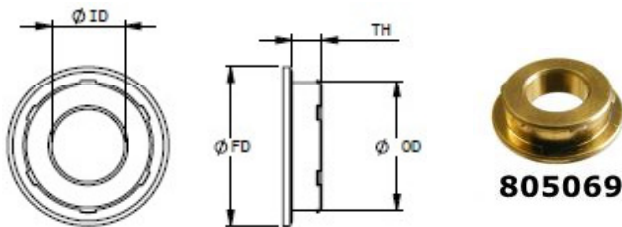
CLR



CLR - Compression Limiters with Round hole. Multiple installation options. Used press fit, ultrasonic, or insert mold depending on application and substrate material.

TH	SIZE ID	OD	Qty Pkg	Item No.	Material
CLFR - Compression Limiters Brass material with Flange base and Round hole					
3	8	14	100	805083	Brass
.118	.315	.551			

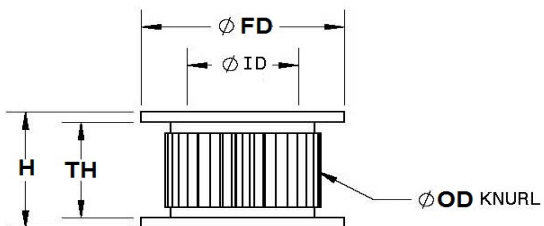
CLP



CLP - Compression Limiters pushin

TH	SIZE ID	OD	Qty Pkg	Item No.	FD	Material
CLFR - Compression Limiters Brass material with Flange base and Round hole						
3	7	12.4	100	805069	15.4	Brass
.118	.276	.488			.606	

CLDF

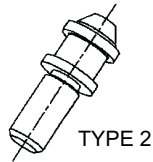


CLDF - Compression Limiters Double Flange

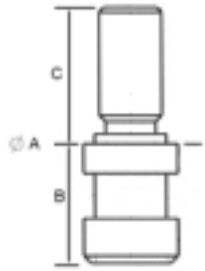


TH	SIZE ID	OD	H	FD	Qty Pkg	Item No.	Material	Knurled
CLDF - Compression Limiters Double Flange								
9	9	13	11	15.4	100	805071	Steel	Yes
.354	.354	.511	.433	.606			Zinc Plated	

MOLDED INSERTS



TYPE 2



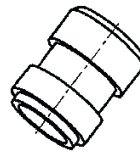
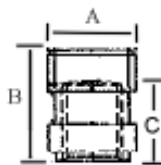
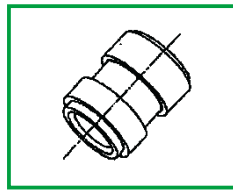
TYPE 1

Usage:

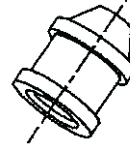
These heavy duty threaded inserts are used for insert molding into glass filled thermoplastic and thermoset materials. Diamond knurls and multiple undercuts lend exceptional rotational resistance to these parts. Steel inserts are designed for mass production, high tensile strength, and low piece cost.

CATEGORY	80 Inserts
MATERIAL	Steel: 12L14 Brass: C3600
FINISH	Steel: Zinc Dichromate Brass: None

Screw Thread Diameter	Total Length (mm)	Part number	Material	A +/- 0.2 (mm)	B +/- 0.2 (mm)	C +/- 1 (mm)	Torsional Strength Ft Lb	TYPE
1/2-13	2-1/4"	805046	12L14	19	22	35	75	1
1/2-13	2"	805049	12L14	19	24.2	25.4	75	1
1/2-13	2"	805051	12L14	19	22.6	25.4	75	2

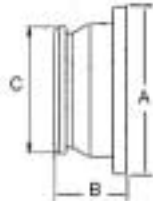


TYPE 3



TYPE 4

Screw Thread Diameter	Total Length (mm)	Part number	Material	A +/- 0.2 (mm)	B +/- 0.2 (mm)	C +/- 1 (mm)	Torsional Strength Ft Lb	TYPE
1/2-13	1-5/8"	805047	12L14	19	24.2	18.3	N/A	3
1/2-13	1-3/4"	805048	12L14	19	26	19	N/A	3
1/2-13	1-1/2"	805050	12L14	19	22.8	15.5	N/A	4
M12-1.75	43	805052	12L14	19	24	19	N/A	3



TYPE 5



TYPE 6

Hole Diameter (mm)	Total Length (mm)	Part number	Material	A +/- 0.2 (mm)	B +/- 0.2 (mm)	C +/- 0.2 (mm)	TYPE	NOTES
8X11	8	805060	C3600	18.75	8	14.2	5	OVAL HOLE 8mm x 11 mm
8	8	377-01	C3600	18.75	8	15	6	Round Hole

All Dimensions subject to change without notice. Dimensions are for reference only.